

A NOTE FROM THE EXECUTIVE DIRECTOR

As 2019 comes to a close, I would like to thank our residents, staff, interns, and volunteers that help to make our communities feel like home. Your hard work and dedication does not go unnoticed. I wish you and your families and friends a joyful holiday season and a happy new year.

I hope you can come out to one of the holiday celebrations taking place at Hamilton Crossing, New Parkridge, and Sauk Trail Pointe in the coming weeks (pg. 5-7). We also have resources for those in need during this holiday season. The Family Empowerment Program and Food Gatherers have partnered to host pop-up food pantries at Hollow Creek, Sauk Trail Pointe and Towner (pg. 3). Ypsi Alehouse is hosting a community holiday dinner (pg. 8) and other local organizations have clothes, toys, and food items available (pg. 9-10).

Happy Holidays!



Zac Fosler
Executive Director & CEO



INSIDE THIS ISSUE

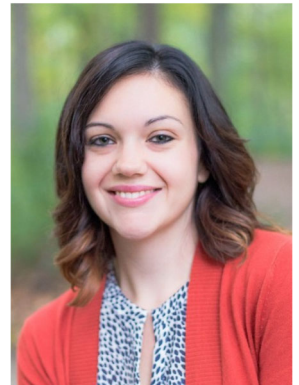
New Staff.....	2
Community Events.....	3
FEP Raffle.....	4
Holiday Toy Assistance...	9
Clothes Closet.....	10
Contact Info.....	12

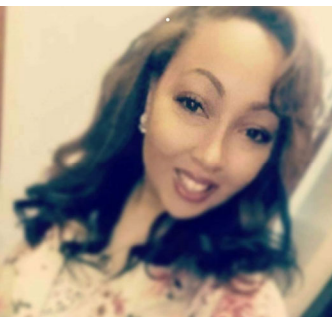


COMMUNITY NEWS

Please welcome these new faces to the New Parkridge and Strong Future Communities!

My name is **Lia Coval** and I am the new Social Worker through the Family Empowerment Program at New Parkridge. I have been working with families in Ypsilanti and Detroit for over five years. I also spent the past year working with adolescents and their families at the Corner Health Center. Please look for upcoming events to see what's new at New Parkridge! I look forward to meeting you! Many of you at New Parkridge have already spoken with the social work interns Brittney, Jasmine, and Brianna. They will be continuing with the Family Empowerment Program through April, 2020. You will likely hear from them to complete upcoming surveys (there is a \$10 gift card for every survey completed).





Hello New Parkridge residents. My name is **Brittney Tinsley**, and I am one of the lucky Interns with the Family Empowerment Program. Some of you may have seen myself and other Interns working at the front desk and other recent programs in your New Parkridge office. I am a new mother, lover of all things art, and student working towards my Masters in Social Work from Wayne State University. Starting January 1st I will be continuing my efforts to assist the New Parkridge community in a variety of ways. During my time here I will be helping in areas such as job search, needs assessments, program development, resource connections, scheduling, after school tutoring, and general office needs. I am excited to continue to get to know your community and assist in areas not limited to those previously mentioned.

Jasmine Stout is an intern from the University of Michigan's School of Social Work. She loves to talk with the many residents that she interacts with in the office and in the community. Jasmine dreams to implement supportive housing in her hometown, and hopes to serve this community the best that she can, while she is here.

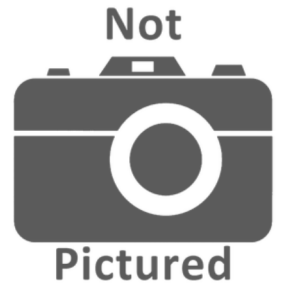




My name is **Brianna Jones** and I am a student at Eastern Michigan University. I study Social Work, hoping to work with families and children. I look forward to meeting many more of you and working with you.



Donna Ford is the new Strong Future Homes Coordinator. She holds a master's degree in social work and has worked as a substance abuse therapist and in individual therapy. In her spare time, she enjoys shopping, working out and spending time with family. She looks forward to working in the community, hearing new ideas from residents and assisting residents in any way possible.



COMMUNITY EVENTS

December 10—Community Dinner (Ypsi Alehouse, 124 Pearl St., 11am-4pm)

YHC Board Meeting (New Parkridge, 6-8pm)

December 14—Breakfast with Santa (Hamilton Crossing, 9am-12pm)

December 18—Towner Food Pantry (3pm-5pm)

Strong Housing Holiday Party (Sauk Trail Pointe, 5-7pm)

New Parkridge Holiday Party (5:30-7pm)

December 20—Hollow Creek Food Pantry (11am-1pm)

December 23—Sauk Trail Pointe Food Pantry (12pm-2pm)



December 2019

Sun	Mon	Tue	Wed	Thu	Fri	Sat
1	2	3	4	5	6	7
8	9	10	11	12	13	14
15	16	17	18	19	20	21
22	23	24	25	26	27	28
29	30	31				



Join the FEP Raffle!

Attend events for a chance to win!
Just sign in to receive your ticket.

Flat Screen Tv
OR
Gaming Console

Must be at least 18 years old and
a Deborah Strong Housing
resident to win. Tickets will be
handed out one hour after
arrival.

Final Drawing at Holiday Party.
Must attend to Win!

DECEMBER 14TH
9:00AM - 12:00PM

BREAKFAST WITH SANTA

Come visit with Santa
and have a delicious
breakfast! Located in the
community building
Hamilton Crossing



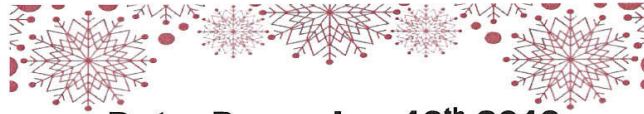
engage@emu





*Dear New Parkridge Residents,
We would love for you to join us, to celebrate the
holidays with fun, food, and music at our annual*

Holiday Party



Date: December 18th 2019

Time: 5:30pm-7pm

Place: New Parkridge leasing office

(New Parkridge residents ONLY, due to capacity restrictions)



**FREE
FOOD**

**COOKIE
DECORATING**

**RAFFLE
& MORE**

STRONG HOUSING

• HOLIDAY •

PARTY!

WEDNESDAY DECEMBER 18, 2019 5:00-7:00 PM

.....
**SAUK TRAIL HOUSING COMMUNITY CENTER
928 W. MICHIGAN AVE.**



**ORNAMENT
DECORATING**

**PICTURES W/
SANTA**

**HOLIDAY
MUSIC**

FINAL DRAWING FOR FEP RAFFLE!

Downtown Ypsilanti Area 2019 Community Holiday Dinner

Tuesday December 10, 2019

11 am to 4 pm



Hosted by: Ypsi Alehouse

124 Pearl Street ~ Downtown Ypsilanti

Corner of Pearl Street & Washington Street

Supported by: the Downtown Association of Ypsilanti, the Washtenaw County Sheriff's Office, Sheriff Jerry Clayton, the AATA and many generous local businesses and individuals.

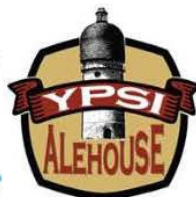
Free to All! Everyone Welcome!
(Handicap Accessible)

Questions, donate, volunteer: Kathy Wyatt wyattk@washtenaw.org or 734-973-4613



DOWNTOWN ASSOCIATION OF YPSILANTI

DAY



TheRide



2019 Holiday Toy and Food Distribution

Eligibility:

Residents of Washtenaw County Only

To register for assistance all clients must **CALL** in to be put on the list.

The call-in list opens December 2nd and closes December 12th

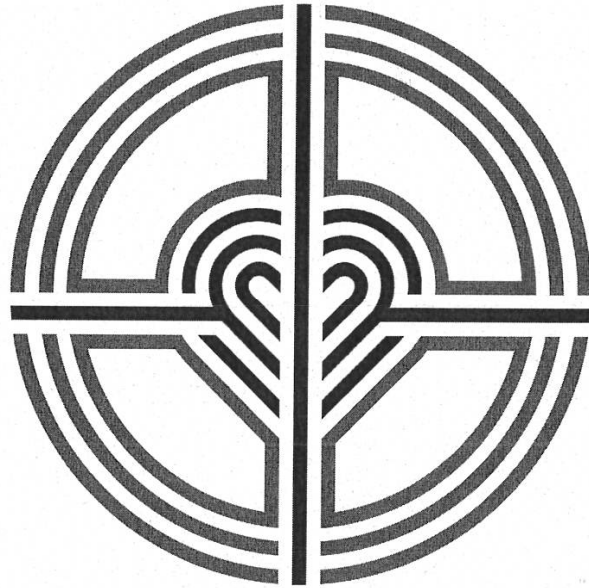
Calls are only accepted Mon-Fri 10am-3pm.

(734) 662-3564

Priority for assistance will be given in this order:

- Families who are registered in Peace Neighborhood Center Programs
- Families who have never been helped by the PNC Holiday Program
- Families who did not receive assistance in 2018
- Families who reside in Ann Arbor
- All other families (Who reside in Washtenaw County)

Getting Your Name On The List **Does Not**
Guarantee Assistance!



EMMANUEL LUTHERAN CHURCH

201 N. RIVER ST YPSILANTI, MI

CLOTHES CLOSET AND MEDICAL LOAN CLOSET

Free clothes and household items distributed

No referral needed

Wednesdays 9am-10:30am

1st Tuesday of every month 5pm-6:30pm

September 3, October 1, November 5, December 3, 2019.

January 7, February 4, March 3, April 7, May 5, June 2, July

7, August 4, 2020.

Each household welcome 1 time every week!



BRINGING THE FUN TO YOU!



**Ann Arbor YMCA
Y on the Fly Winter I 2019-2020
November 18th -February 1st**

The Sport Port Program provides sport sampling and access to equipment to local parks and community centers in Ypsilanti!

Trained and caring Y staff will be present to encourage safe and free play. Sports include soccer, basketball, flag football, T-ball, parachute games and more!

Sauk Trail Pointe

Every Wednesday 3:30-5pm

There will be no Y on the Fly during Winter break.

Register online at: bit.ly/YSportPort

*Registration is requested to participate

**Web address is case sensitive

For more information contact:

FEP Social Worker at (734) 756-5152 or

Tess Jackson at (734) 255-2300

or tjackson@annarborymca.org

ANN ARBOR YMCA
400 West Washington Street
Ann Arbor, MI 48103
734.996.9622

Sport Port is

FREE

for youth ages 5-13



OUR COMMUNITIES

Hamilton Crossing (144 Units)
596 South Hamilton St.

Hollow Creek (24 Units)
A Deborah Strong Property
130 S. Grove

New Parkridge (86 Units)
831 Hilyard Robinson Way

Sauk Trail Pointe (36 Units)
A Deborah Strong Property
928 W. Michigan Ave.

Scattered Sites (29 Units)

Towner (23 Units)
A Deborah Strong Property
Towner St.

Ypsilanti Housing Commission
601 Armstrong Dr.
Ypsilanti, MI 48197
Phone: 734-482-4300

Family Empowerment Program
(734) 340-2411

Hamilton Crossing
596 S. Hamilton Street
(734)-484-1706

Hollow Creek
130 S. Grove
(734) 221-5499

New Parkridge
831 Hilyard Robinson Way
(734) 961-7453

Sauk Trail Pointe
928 W. Michigan Ave.
(734) 547-5117

RESIDENT TEXT ALERTS

Make sure the property management office has the most current cell phone number where you can be reached.

YOU SHOULD RECEIVE AN "OPT-IN" TEXT MESSAGE

**TO OPT-IN
REPLY "OK" TO "24251"
(CALLINGPOST MESSAGE FROM YHC)**

OR

TEXT "CPC" TO "24251"

If you did not receive a text from "24251" please contact the YHC office (734) 482-4300



SIGN-UP TO RECEIVE

EVENT ANNOUNCEMENTS

NOTICES FROM PROPERTY MANAGEMENT

EMERGENCY ALERTS

www.ypsilantihc.org

www.facebook.com/

**Questions? Suggestions?
Please email Tarah Hearnst
hearnst@ypsilantihc.org**



Ypsilanti Housing Commission

Like Us on Facebook
[Facebook.com/YpsilantiHC](https://www.facebook.com/YpsilantiHC)

